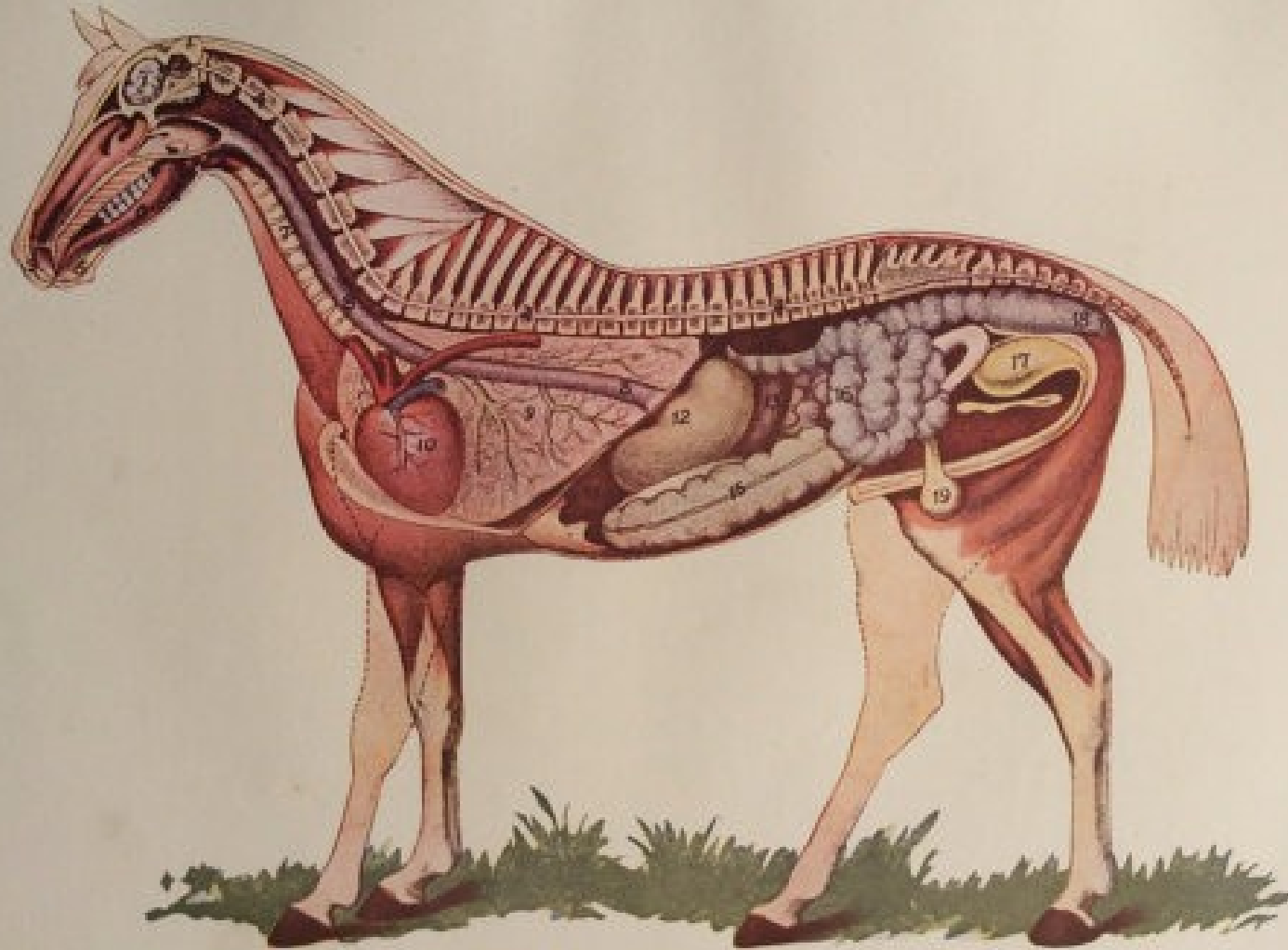


ANATOMIE TOPOGRAPHIQUE GAUCHE EQUIDE

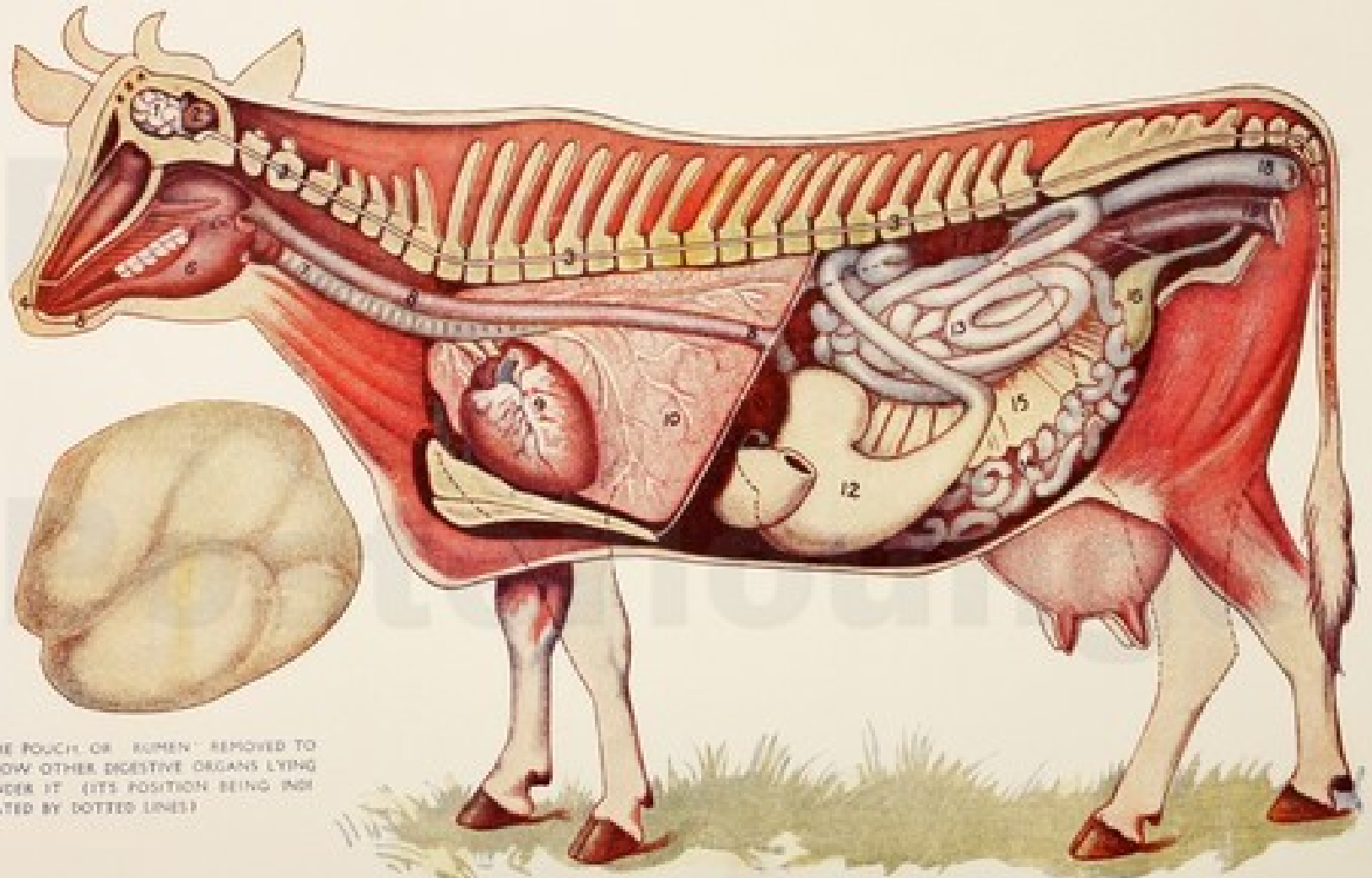
Plate 17



INTERNAL ORGANS OF HORSE.

London: Virtue & Co. Limited, City Road

ANATOMIE TOPOGRAPHIQUE GAUCHE BOVIN

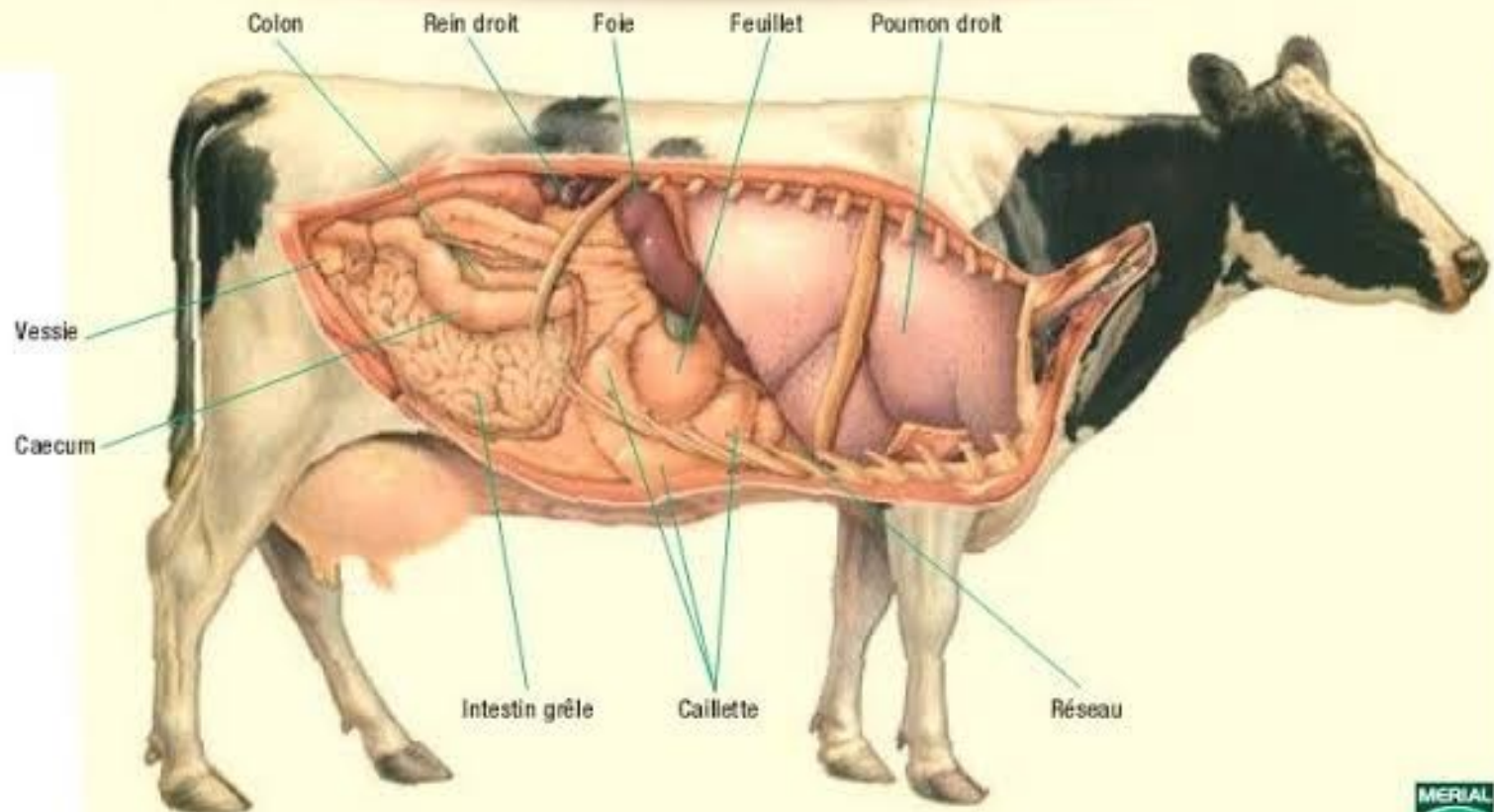


THE POUCH OR "RUMEN" REMOVED TO SHOW OTHER DIGESTIVE ORGANS LYING UNDER IT (ITS POSITION BEING INDICATED BY DOTTED LINES)

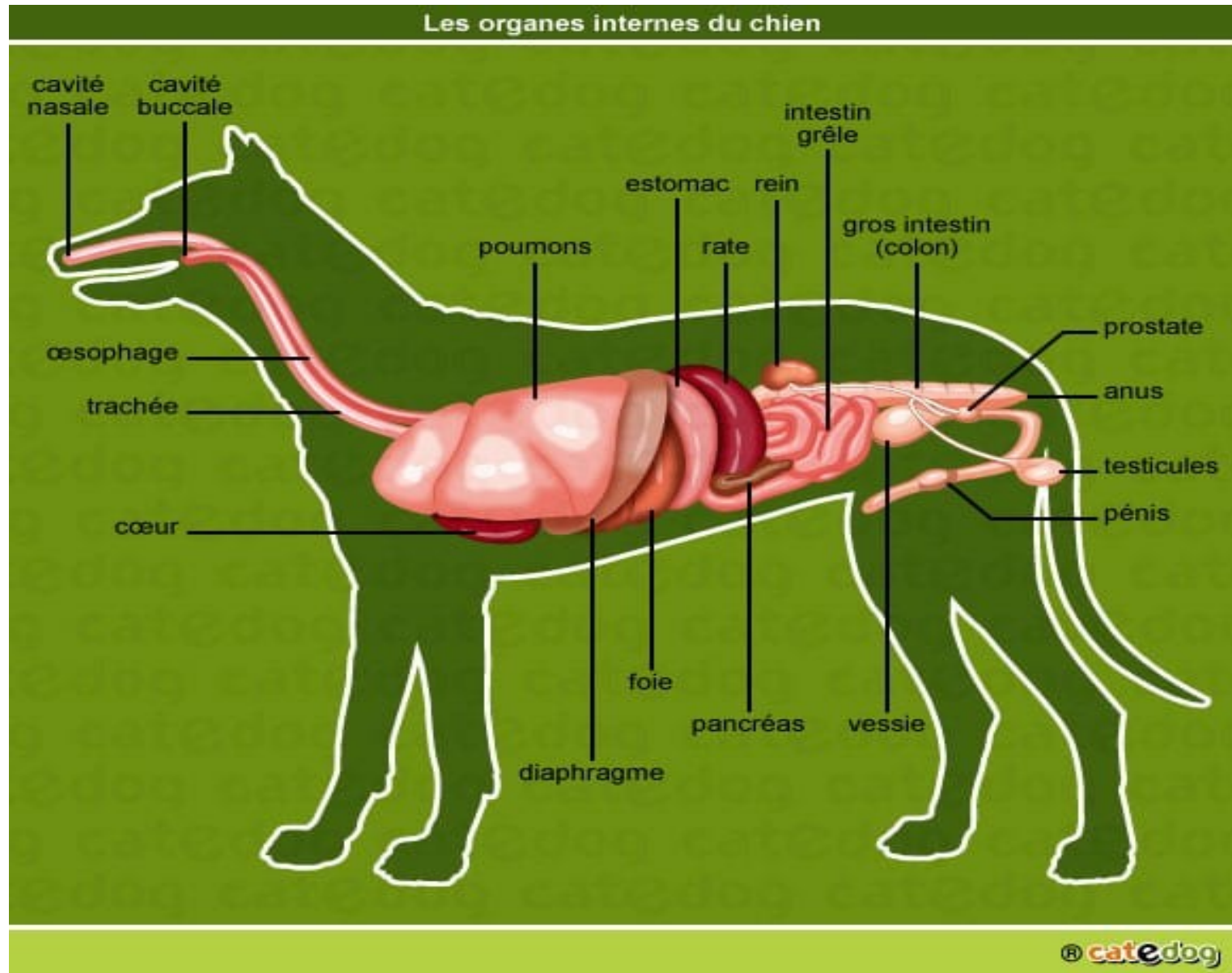
ANATOMIE TOPOGRAPHIQUE DROITE BOVIN

Anatomie

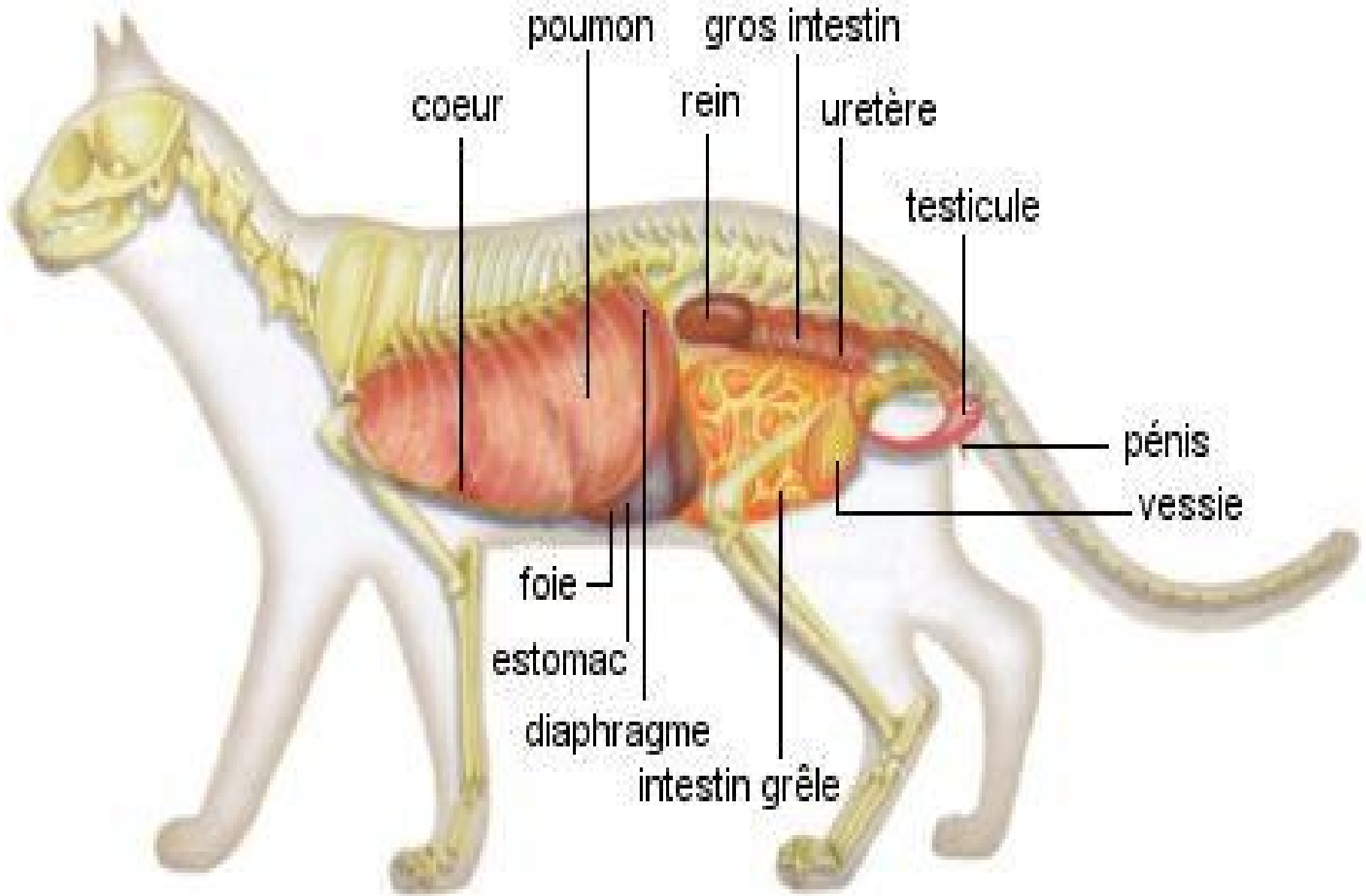
Anatomie interne générale



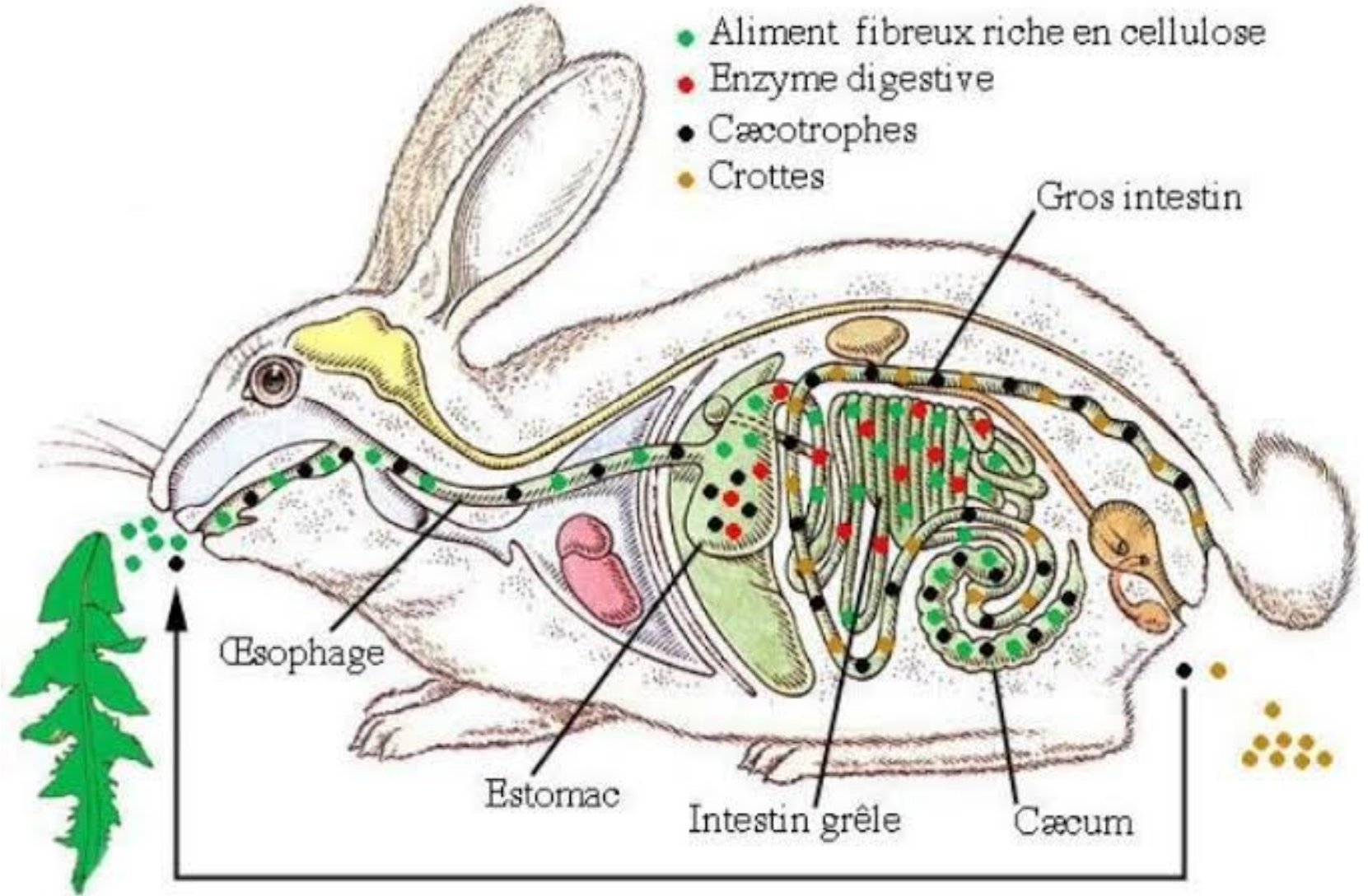
ANATOMIE TOPOGRAPHIQUE GAUCHE CHIEN



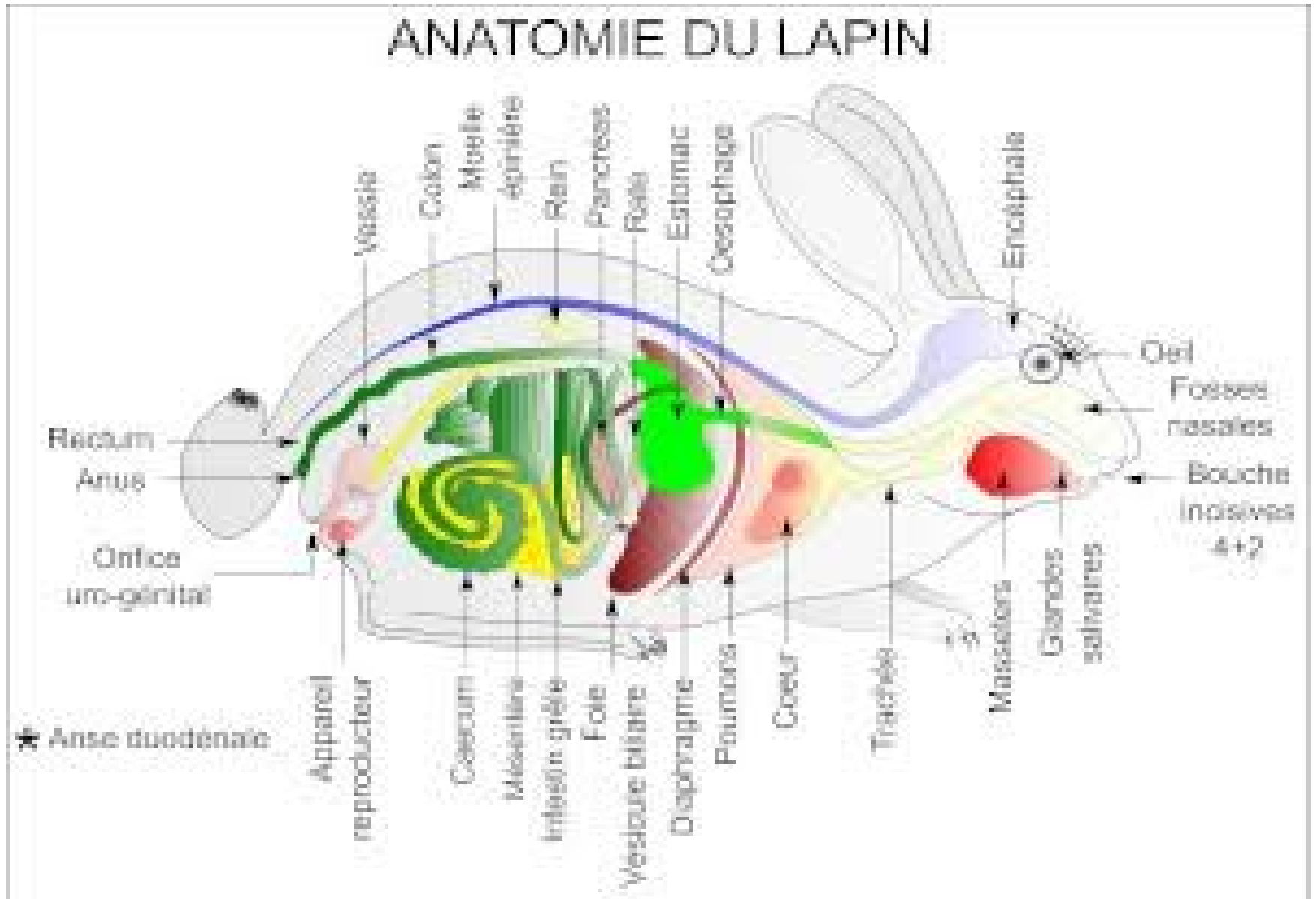
ANATOMIE TOPOGRAPHIQUE GAUCHE CHAT



ANATOMIE TOPOGRAPHIQUE GAUCHE LAPIN



ANATOMIE TOPOGRAPHIQUE DROITE LAPIN



ANATOMIE TOPOGRAPHIQUE DROITE LAPIN

